

Setup Guide

Plié[®] 2.0
MPC KNEE

1. Establish Wireless Connection

To optimize the microprocessor, communication must first be established between the programming computer and the user's Plié[®] 2.0 MPC Knee:

- Open the Plié Control software (Start>All Programs>Plié>Plié Control).
- Insert the provided USB wireless adapter in any available USB port.
- Remove and re-insert the battery. Battery insertion activates the knee wireless module for five minutes.
- Select the **Search** icon.
- After the knee is found, select the **Connect** icon to establish a wireless connection. If the **Connect** icon changes to a **Disconnect** icon, the wireless connection is verified.

2. Plié 2.0 Setup Wizard

Open the Plié 2.0 Setup Wizard (Plié Control>Setting Wizard). Follow the steps provided in the Plié Setup Wizard, always beginning with **First Setup**.

- Select **First Setup**. Then select **Next**.
- In the Basic Setup Mode window, select **Setup Mode**.
- As the user unweights the prosthesis, select **Calibrate** icon to calibrate the load sensor. Instruct the user to ambulate or weight the prosthesis in a hyperextended position to calibrate the angle sensor. The angle sensor calibration must be completed within 2 minutes of selecting the **Calibrate** icon.
- Instruct user to ambulate. If the knee does not release into swing, lower the **Toe Threshold** setting in the Plié Control window until the knee releases.

3. Adjust Manual Hydraulic Settings

Adjust the default manual hydraulic settings in the following order to ensure the knee motion is smooth and symmetrical for the user. Higher numerical values provide increased resistance for each hydraulic resistance setting.

- Using the pneumatic pump, adjust swing flexion resistance (heel rise).
- Adjust swing extension resistance with a 4 mm allen key (terminal impact).
- Adjust stance flexion resistance with a 4 mm allen key (stair/ramp descent resistance). Optimize performance for stair/ramp descent.



4. Optimize Microprocessor Settings

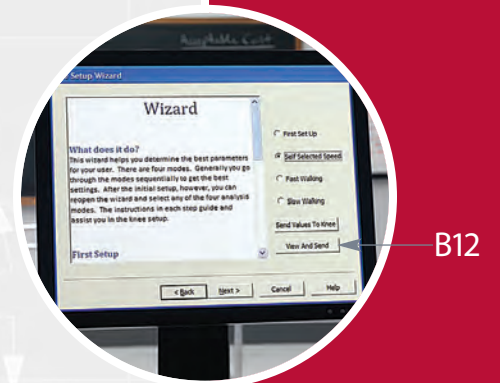
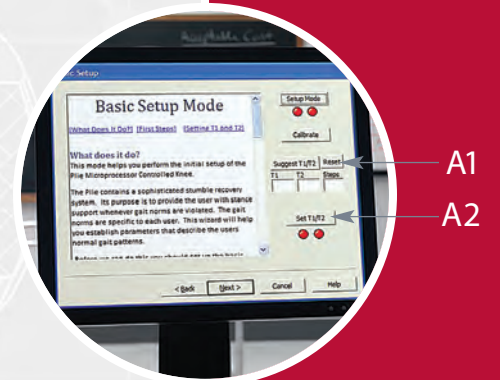
Return to the Plié Setup Wizard (Plié Control>Setting Wizard).

A. Determine Threshold and Trigger Settings

1. Select the **Suggest T1/T2** icon. Instruct the user to ambulate with variable cadences, including fastest and slowest walking speeds until 20 steps are shown in the **Steps** box.
2. Select the **Set T1/T2** icon. The suggested values will be set in the knee.
3. Repeat steps a & b until the suggested T1 and T2 values exhibit minimal variance.
4. Select the **Next** icon to return to the main Plié Setup Wizard window.

B. Optimize Stumble Recovery Parameters

1. Select the **Self Selected Speed** icon and select the **Next** icon.
2. In the Self Selected Walking Analysis window, select the **Start Recording** icon. Instruct the user to take twenty steps at his/her self-selected walking speed. Once complete, select the **Stop Recording** icon.
3. Select the **Save Data** icon. The self-selected walking recorded data file will be transferred wirelessly to the computer.
4. Select the **Next** icon to return to the main Plié Setup Wizard window.
5. Select the **Fast Walking Analysis** icon and select the **Next** icon.
6. In the Fast Walking Analysis window, select the **Start Recording** icon. Instruct the user to take twenty steps at his/her fastest walking speed. Once complete, select the **Stop Recording** icon.
7. Select the **Save Data** icon. The fastest walking recorded data file will be transferred wirelessly to the computer.
8. Select the **Next** icon to return to the main Plié Setup Wizard window.
9. Select the **Slow Walking Analysis** icon and select the **Next** icon.
10. In the Slow Walking Analysis window, select the **Start Recording** icon. Instruct the user to take twenty steps at his/her slowest walking speed. Once complete, select the **Stop Recording** icon.
11. Select the **Save Data** icon. The slowest walking recorded data file will be transferred wirelessly to the computer.
12. After the three data files have been recorded, select the **View and Send Values to the Knee** icon. The Plié Setup Wizard will transfer the optimal Stability Parameters to the knee.



5. Document

After completing the knee setup, provide documentation in the user's records.

- a. Record the knee Serial Number in the user's chart. To maintain user confidentiality, the Serial Number is referenced when technical support, warranty repairs, or warranty service is required.
- b. Record the three manual hydraulic settings in the user's chart: swing flexion, swing extension, stance flexion.
- c. Save the user's computer settings on a secure computer. To save, select "Save Settings" from the "File" menu (Plié Control>File>Save Settings).

For more information, consult the Instructions for Use Manual or call 888.818.6777.

30 Fairbanks, Suite 114, Irvine CA 92618 toll-free 888.818.6777 tel 949.672.0032 www.freedom-innovations.com

© 2010 Freedom Innovations, LLC All rights reserved. R-720-110 Plié® 2.0 MPC Knee Quick Setup Guide, Rev A
Plié® 2.0 MPC Knee is a trademark of Freedom Innovations, LLC

